

This convenient little carrying case protects your machine while travelling and provides a comfortable writing base if you have no table. \$5.00 extra.



Every essential feature of larger typewriters is retained; scientific modern designing has eliminated unnecessary parts and simplified the entire operation of the ALLEN.

1/3 as many parts

1/3 as much weight

1/3 the price

The ALLEN Typewriter is equipped with all the desirable features of the heavier, more expensive machines. It has the full size platen (rubber roller), takes a standard 8½" x 11" sheet of paper; has the standard shift keys; backspacer; and all other equipment. The keyboard is three-bank; every key in the standard position; with three more type characters than the heavier machine. It has 29 keys, 3 characters to a key, while other machines have more keys but less type characters.

The construction of the ALLEN Typewriter is simple and sturdy; all joints are electrically welded instead of soldered, which promotes longer life in the machine, makes it stronger, lighter, saves you time, money and energy in operating.

In the ALLEN Typewriter modern engineering has perfected a machine of marvelous simplicity, durability, efficiency, eliminating all unnecessary parts, making it light enough to carry comfortably, yet strong enough to do the work of the heavier machine.

The **ALLEN** *Typewriter*

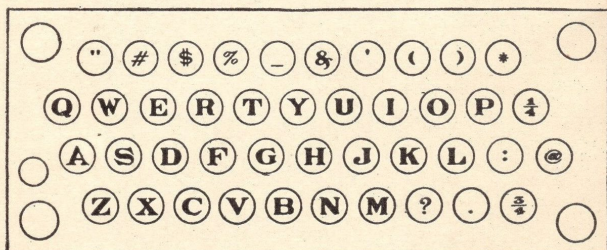
The ALLEN Typewriter is the perfected product of modern engineering : : a simplified typewriter which takes the place of heavy, cumbersome machines : : weighs about one-third as much : : performs as efficiently and as easily : : lasts as long and is light enough to carry around comfortably.

STANDARD KEYBOARD ARRANGEMENT

OLD LAYOUT—42 KEYS



Normal Position—Mixed Letters and Characters



Capital Position—Mixed Letters and Characters

84 CHARACTERS

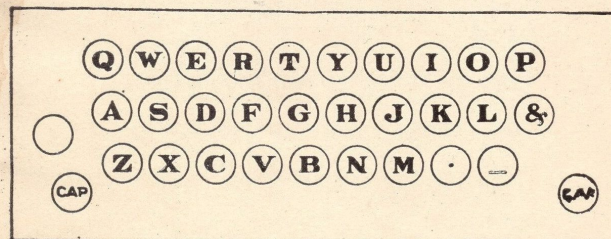
At the left is shown the keyboard of ordinary typewriters : : there are more keys to memorize, consequently more confusing and taking more energy to operate.

At the right is shown the improved keyboard of the ALLEN Typewriter : : Note that the keys are in the same standard position : : When you have learned the ALLEN keyboard, you know all keyboards.

SIMPLIFIED ALLEN LAYOUT—29 KEYS



Normal Position—Small Letters



Capital Position—Large Letters

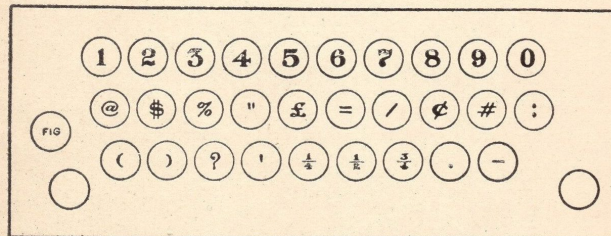


Figure Position—Numbers and Characters
87 CHARACTERS

At the right the first sketch above shows the keyboard in normal position : : the second sketch shows the keyboard when the "capital" key is depressed : : and the third sketch shows the keyboard when the "figure" key is depressed.

The ALLEN Typewriter has a shift key for capital letters on both the right and left hand side : : These keys can be locked into position and released easily with the touch of a finger.

Specifications

ALLEN Typewriter

Weight, 11 lbs; with carrying case, 15 lbs.

Size, 10"x12"x7" high.

Standard platen (rubber roller), 1½".

Carriage holds paper 9½" wide; writing line 7½"; writing visibility equal to any large machine.

Ball bearing carriage, front stroke type bar; rotary escapement, making easy, speedy, positive writing action.

Standard pica type on special steel type-bar held on tempered steel axle.

Eighty-seven type characters on 29 keys; three characters to each type bar; three rows of keys in Universal standard arrangement.

Shift keys with special lock provide faster writing ability; capital shift keys on both sides of machine.

Back spacer of extra efficiency; line spacer can be set for 1, 2 or 3 spaces between lines.

Permanent postcard and paper holder, requiring no adjustment and providing sure grip.

Left marginal stop and release; same release used for line lock release.

Paper feed roller nearly as long as platen.

Manifolder of standard capacity.

Two-color ribbon, instantly interchangeable; direction change semi-automatic. Ribbon moves only when typing, no waste in ribbon.

The ALLEN Typewriter has only 600 parts, where other typewriters have from 2500 to 3000 parts; the ALLEN Typewriter weighs only 11 lbs. whereas other standard specification machines weigh in excess of 30 lbs.

Guaranteed against defects in construction for a year. Built strong enough for life.

Manufactured by

ALLEN TYPEWRITER MFG. CO., INC.

at Allentown, Pa., U. S. A.

Sales Room, 31 Park Row, New York City

The
ALLEN
Typewriter

